

PHOTO: OUT OF BODY  
VR DEATH RITUAL  
CONCEPT WITH  
PROFESSOR  
SEBASTIAN SCHLECHT

# PORTFOLIO

PRESENTED BY  
MOSS BEYNON JUCKES

MULTIDISCIPLINARY  
EMBODIED  
EXPERIENCING

# CONTENTS - RELEVANT WORK

<b>MOSS</b>	<b>1</b>
<b>ROSALIND</b>	<b>2</b>
<b>CONSORTIA / SUELO</b>	<b>3</b>
<b>MORPH</b>	<b>4</b>
<b>DOLO- (SOFTCURE COLLECTIVE)</b>	<b>5</b>
<b>COLLABORATIONS</b>	<b>6</b>

FERTILE PRESENCE DOCU.

STRANGE SPEECH

OUT OF BODY

DREAM OPERATOR

HOW DO WE ! 'STORYING OTHERWISE' (HARAWAY)?  
BY RE-TELLING AND RE-CONTEXTUALIZING THE  
POLITICAL THROUGH DIFFERENT EMBODIMENT  
PRACTICES SUCH AS SLOW PRACTICE, EXTENDED  
VOCAL TECHNIQUES, SONG, GAME,  
RITUAL CREATION, INTERSPECIES COMMUNICATION,  
AND CYBORG INTEGRATION - HOW CAN WE  
ARTICULATE AND EMBODY A NEW PARADIGM INTO  
BEING, WHILE CHALLENGING OUTDATED OR  
EMERGING SYSTEMIC MODELS OF COLLECTIVE  
BEHAVIOUR THAT DO NOT SERVE THE FLOURISHING  
OF HUMANITY.

**MOSS BEYNON JUCKES**

**1**

# ROSALIND MASSON

OCCUPYING EDEN

NO MANS LAND

NEISSE CENTRE FOR  
CONTEMPORARY ARTS

I USE THE BODY AS A LOCUS FROM WHICH TO EXPLORE AND REFLECT UPON MATERIAL TRANSITION IN RELATION TO CULTURAL AND ENVIRONMENTAL TRANSFORMATIONS ACROSS TIME. HOW CAN COLLABORATION ACROSS MATERIALITIES AND DISCIPLINES OPEN UP A DIALOGUE AROUND EMBODIMENT AND TRANSFORMATION. I QUESTION THE IMPLICATIONS AND APPLICATIONS OF EMBODIMENT IN RELATION TO CULTURE, SOCIETY AND THE ENVIRONMENT.



# SUELO METHODOLOGY- (ELA SPALDING)

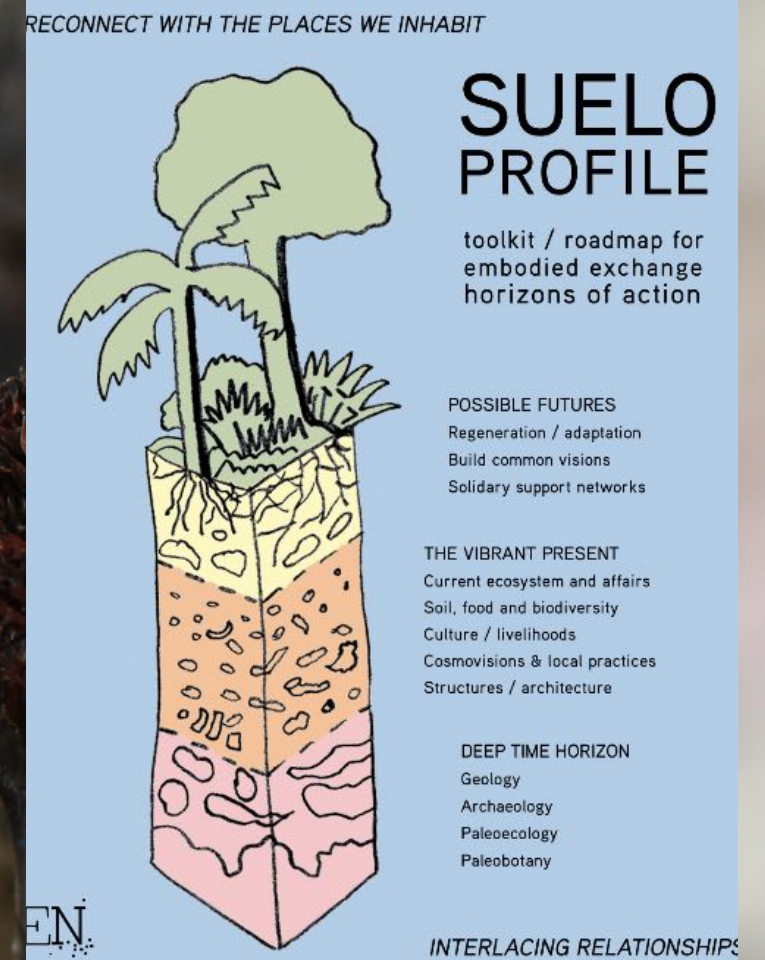
SUELO IS A METHODOLOGY DESIGNED TO RECONNECT WITH THE PLACES WE INHABIT, THROUGH THE CONCEPT, METAPHOR AND MATERIALITY OF SOIL AS SUSTENANCE, HOME, LAND AND TERRITORY

## WE ARE (CONSORTIA)!

WE ARE (CONSORTIA)! IS A PERFORMATIVE, DURATIONAL EXPERIENCE BUILT UPON PRINCIPLES INSPIRED BY CELLULAR EVOLUTION AND DEEP LISTENING. MOSS BEYNON JUCKES & ROSALIND MASSON

'LYNN MARGULIS AND THE BIOGRAPHICAL DOCUMENTARY 'SYMBIOTIC EARTH', BRING TO OUR ATTENTION HOW HUMAN BEINGS ARE HOLOBIONTS. HOW ARE WE ENTANGLED WITH EACH OTHER AND OUR ENVIRONMENTS AS SENSING HUMANS, HOLOBIONTS AND HOW IS OUR VERY EXISTENCE A CONSTANT SHIFTING PARADIGM OF POLYSPECIES INTERPLAY.

PSR HEIZHAUS / HELLERAU  
BERLIN. DRESDEN.

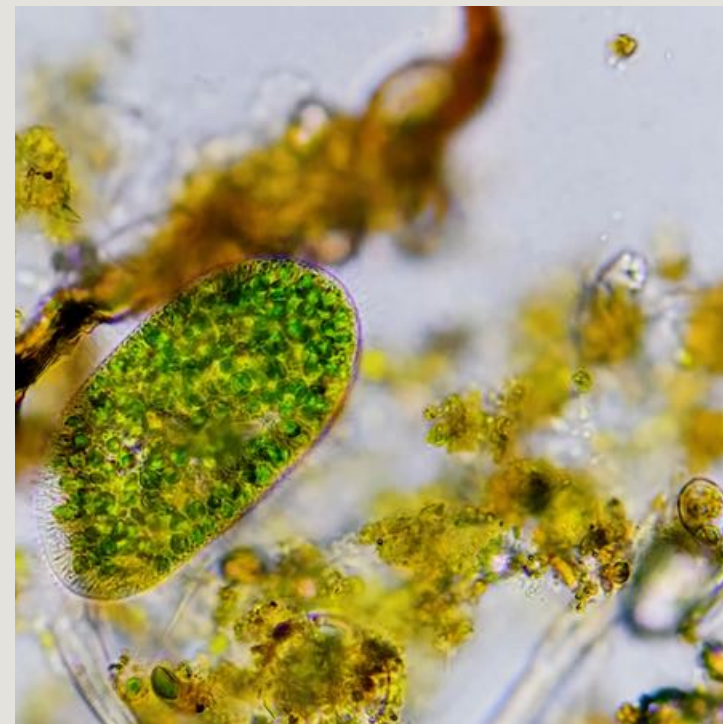


# MORPH

EXERCISES		
<input type="radio"/>	Multispecies Duets A-B	6:30
<input type="radio"/>	Sludge Score Three Corners	14:00
<input type="radio"/>	River of words	3:00
<input type="radio"/>	Into Consent Duos Moving Hand Resistance End On Floor	7:00
<input type="radio"/>	Sonic Clumps	4:00
<input type="radio"/>	Inside Out/ My Watery Self/ Solos	4:00
<input type="radio"/>	Molecular Constellations	7:00

PERFORMANCE PROJECT WITH MOSS BEYNON JUCKES AND ROSALIND MASSON AT UFERSTUDIOS TANZFABRIK

# TANZFABRIK BERLIN.

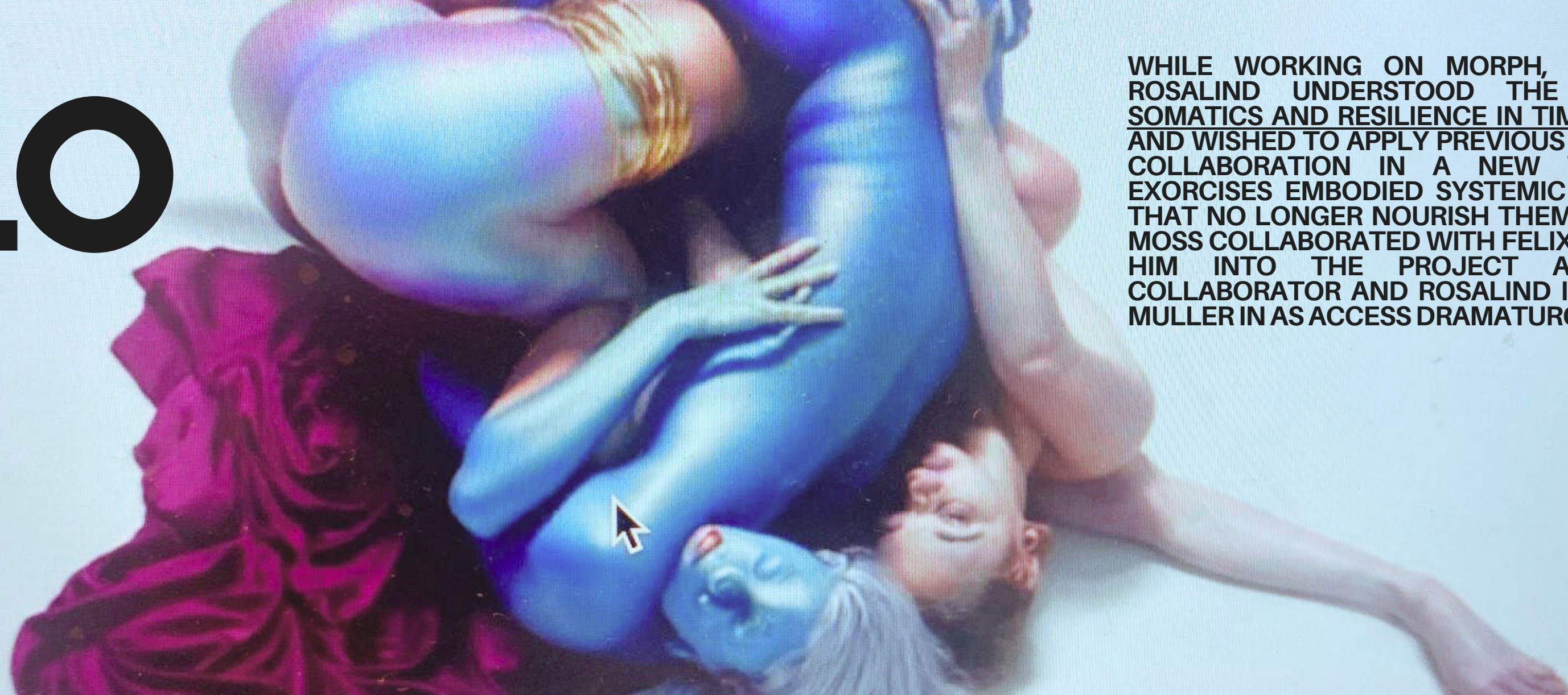


**MORPH- A SYMPOETIC SOCIAL CHOREOGRAPHY THROUGH PARTICIPATION IN A SET OF INSTRUCTIONS OR 'ENGULF-SCORE'**

**MORPH EMERGED AS A CONCEPT DURING A COLLABORATIVE RESIDENCY CALLED WE ARE (CONSORTIA)! AT PSR/HEIZHAUS BERLIN, WITHIN ELA SPALDINGS SUELO METHODOLOGY SHARING. UNDERSTANDING THE BODY AS HOLOBIONT WE WERE INSPIRED BY HOW DEATH ON THE MICROSCOPIC LEVEL, IS RATHER MORE LIKE ENGULFING AND RECYCLING THAN DISAPPEARANCE. WE CREATED AN ENGULFING PRACTICE AND LED 20 STUDENTS INTO A PERFORMANCE SHARING**

# DOLO

PROPOSAL - AN EXPLORATION OF CRUEL OPTIMISM AND THE INTERSECTION OF BODIES, TECHNOLOGY, AND CONSENT.



WHILE WORKING ON MORPH, MOSS AND ROSALIND UNDERSTOOD THE NEED FOR SOMATICS AND RESILIENCE IN TIMES OF CRISIS AND WISHED TO APPLY PREVIOUS METHODS OF COLLABORATION IN A NEW WORK THAT EXORCISES EMBODIED SYSTEMIC BEHAVIOURS THAT NO LONGER NOURISH THEM AS HUMANS. MOSS COLLABORATED WITH FELIX AND INVITED HIM INTO THE PROJECT AS LIGHTING COLLABORATOR AND ROSALIND INVITED ROSA MULLER IN AS ACCESS DRAMATURG

5

DOLO IS AN INTERDISCIPLINARY DANCE PERFORMANCE EXPLORING THE ENTANGLEMENT OF HUMAN BODIES, A.I, FANTASY AND THE EXPLOITATION OF INTIMACY WITHIN THE SOCIO-POLITICAL STRUCTURES OF TECHNO-CAPITALISM. THE WORK INTENDS TO INTRODUCE SPECULATIVE A.I AS A THIRD ENTITY, TRICKSTER, PROGRAMMED TO INTERVENE, REINTERPRET, AND MEDIATE HUMAN INTIMACY IN BOTH LIBERATING AND MICRO-AGGRESSIVE WAYS. WE ARE MOTIVATED TO EXPOSE THE EXPLOITATIVE FOUNDATIONS AND FANTASTICAL FUTURISMS HIDDEN INSIDE THE NARRATIVES OF TECHNOLOGICAL "PROGRESS."

IN DOLO, ACCESSIBILITY IS AN INTEGRAL ARTISTIC AND RESEARCH PRINCIPLE. OUR CHOSEN WORKING CONDITIONS, SHAPED BY CAREGIVING RESPONSIBILITIES, NEURODIVERGENCE, AND TRAUMA-INFORMED PRACTICE, DIRECTLY INFORM THE STRUCTURE AND AESTHETICS OF THE WORK.

## SOFTCURE COLLECTIVE

MOSS BEYNON JUCKES IS A MULTIDISCIPLINARY DANCE ARTIST BORN IN SYDNEY. SHE HAS WORKED FOR TINO SEHGAL SINCE 2012 AND COLLABORATED WITH SHEENA MCGRANDLES, CLAIRE VIVIANNE SABOTKE, MICHAEL PORTNOY, NWANDO EBIZIE AMONG OTHERS [HTTPS://MOSSBEYNONJUCKES.COM](https://MOSSBEYNONJUCKES.COM).

ROSALIND MASSON IS A CHOREOGRAPHER BORN IN GLASGOW WITH AN MSC IN MEDIA ART FROM DJCAD. HER OWN COMPANY ANIMA(L)[US] HAS PRODUCED OVER EIGHTEEN LIVE/SCREEN WORKS WHICH HAVE EXHIBITED AND TOURED INTERNATIONALLY. SHE HAS COLLABORATED WITH LABORGRAS SINCE 2014. IN 2019, SHE CO-FOUNDED NEISSE CENTRE FOR CONTEMPORARY ART IN SAXONY. [HTTPS://ROSALINDMASSON.COM/](https://ROSALINDMASSON.COM/)

FELIX MATHIAS OTT WORKS INTERNATIONALLY AS A CHOREOGRAPHER AND STAGE DESIGNER/LIGHTING DESIGNER FOR FILM AND THEATRE. IN HIS WORKS, NOT ONLY ARE THE SENSORY LEVELS OF OBJECTS AND BEINGS SHIFTED, BUT ENTIRE SYSTEMS OF THOUGHT ARE REDUCED TO ABSURDITY.

NILS PEER BECK A.I LEAD, RESEARCHES AND PLAYS BETWEEN COMPUTER SCIENCE, PERFORMANCE, AND PHILOSOPHY. THEY HOLD A B.S.C. IN COMPUTER SCIENCE FROM TECHNISCHE UNIVERSITÄT DARMSTADT, WHERE THEY CREATED A TEXT METAPHORIZER (2021), ENGAGING STATE OF THE ART MACHINE LEARNING RESEARCH WITH COGNITIVE LINGUISTICS. NILS WORKS AT HZT, WHILE PURSUING AN M.A. IN CRITICAL DANCE STUDIES.

ROSA MÜLLER INTEGRATED ACCESS DRAMATURG-, HAS A MASTER'S DEGREE IN CULTURAL STUDIES AND IS EXPERIENCED IN INTERNATIONAL PROJECT MANAGEMENT AND ARTISTIC PROGRAMMING. SHE WORKS AT THE INTERSECTION OF ART, SOCIETY, AND ORGANIZATION AND FOCUSES ON HOW STRUCTURES CAN BE DESIGNED TO FOSTER COLLABORATION AND ENABLE CHANGE



# COLLABS. CONNECTORS.

TINO SEHGAL  
MICHAEL PORTNOY  
NWANDO EBIZIE  
SHAYMAA SHOUKRY  
SHEENA MCGRANDLES  
CLAIRE VIVIANNE SABOTTKE  
COLIN SELF  
KUKII  
PARA ACTIVE  
GUILLERMO GOMEY PENA  
JONATHAN GRIEVE  
OILY CART THEATRE  
LABORGRAS